

Comprehensive Range of Products covering entire spectrum of Andrology

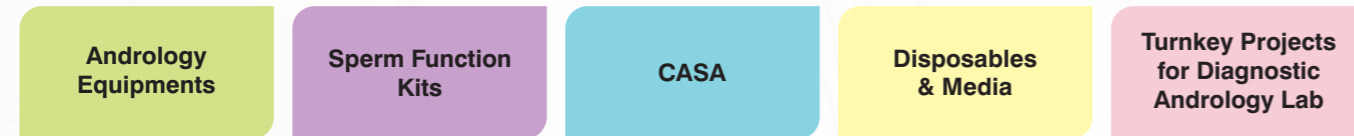


INTRODUCTION

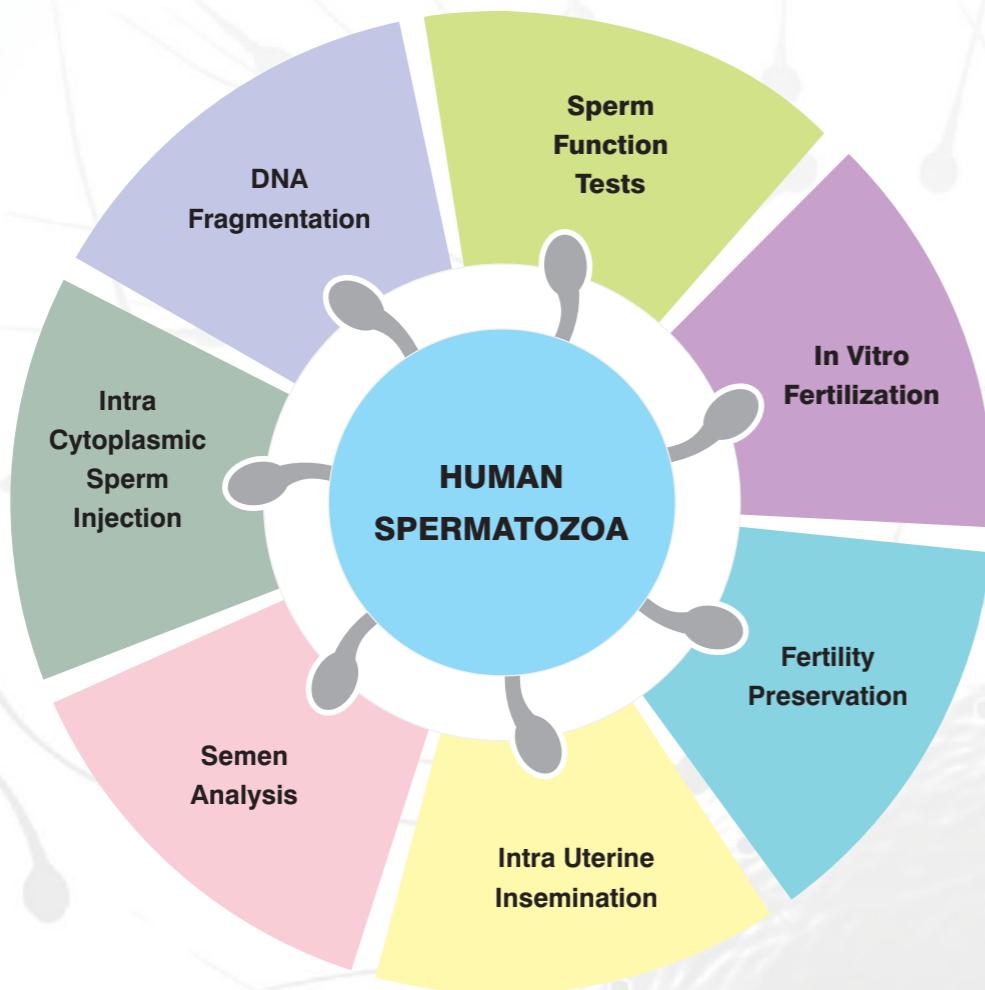
According to studies conducted by WHO (World Health Organization), one in every four couples are affected by infertility in developing countries. There are multiple factors contributing to infertility which may be related to male factor, female factor or both. Approximately 25% of infertile couples have more than one factor contributing to their infertility. In approximately 40% of infertile couples, the male partner is either the sole cause or a contributing cause of infertility.

Human spermatozoa is one of the key gamete required in all the procedures whether it is In Vitro Fertilization, Intra Uterine Insemination, Intra Cytoplasmic Sperm Injection, Fertility Preservation or DNA Fragmentation tests. The declining minimal WHO reference parameters, and therefore the fine line between normal and infertile males necessitates a closer look at the spermatozoa using a much more holistic approach than is currently in practice.

Wondersperm is resolving challenges in male infertility with its comprehensive range of Andrology products



Wondersperm Resolving Challenges In Male Infertility



BENCH TOP ANDROSTATION



Order Code : WS 1021

androstation
CE



Microprocessor Control

Microprocessor control with bright green LCD display automatically perform all functions.

Microprocessor Control Features:

- LCD Display to show alpha numeric messages.
- Feather touch keypad.
- Digital display of pressure difference across filter.
- Filter fan can be run on five different speeds as per the user's need.
- Microprocessor checks hourly usage of Hepa Filter and UV light & warns of replacement after 3000hours of usage.
- Interlock of UV Light & White Light.

Androstation is designed to provide clean air devoid of SPMs in the andrology lab environment. The construction of the cabinet ensures clean and sterile condition for the protection of semen samples from any ambient or external impurities. The Androstation comprises microprocessor control, UV light, white working light, stainless steel table top and power socket port as standard.

- **HEPA Filter :** The Hepa filter assembled in the cabinets are fully validated and cross checked in our own QC lab to ensure optimal performance. The filter paper and filter media is from the best manufacturers of the world. The Hepa filter complies to filter grade EU13 / H13 of ISO EN1822 and with filtration efficiency of 99.99%. Suitable for clean room ISO CLASS 5 in work space as per ISO 14644-1 : 2015.
- **Wide Access :** The opening of Androstation is 700mm, which is bigger than all the available andrology workstations giving ample space to the operator. The stainless steel work top ensures ease in cleaning.
- **Air Flow :** Vertical Laminar Downflow. Air blown in order to generate a very smooth vertical laminar downflow.
- **Low Noise & Low Vibration :** The German blower along with the electronic control ensures silent running and comfortable atmosphere to laboratory staff. Specifically designed air distribution further improves the air flow.



ANDROFUGE

Androfuge has been designed to give optimal performance at economical cost. It very well satisfies the routine centrifuging requirements of an Andrology Lab for sperm preparation.

Design:

- Metal housing with Metal lead
- Viewing port in the lead
- Brushless indication motor

Safety:

- For dynamic braking
- Low vibration
- Safety control through VFD

Control:

- Microscope processor controller
- Timer up to 99 minutes
- Last parameter re-call

androfuge
CE



Order Code : WS 1026

SPERMFUGE



Order Code : FX 1056

Spermfuge is an improvised centrifuge, dedicated totally for elevating the total motile sperm recovery from the parent semen sample, by regulating the main parameter of "Temperature" which is aimed at enhancing the ART results. By regulating the temperature throughout the centrifugation, the Spermfuge improves sperm motility and longevity when compared to a non-temperature regulated centrifuge, thus increasing the effectiveness of the sperm wash procedures.

Acceleration And Braking

An adjustable brake is provided to prevent the rotor from stopping too quickly at the end of the run which might disturb the firmly formed pellet. One can select between 3 modes in acceleration, namely braking-slow mode, medium mode and fast mode on screen.

Spermfuge
Temperature Regulated Centrifuge
SF 800
CE

G-Force

The exact indication of g-force helps the ideal sperm pellet formation by subjecting the sperm to an exact and precise amount of g-force unlike other centrifuges where the g-force is subject to RPM and the tube size.

Temperature and Centrifugation

The heating range of SPERMFUGE's chamber is from 26°C to 42°C. The intelligent control system does not allow the centrifugation to commence till the set temperature is attained.

Multiple Programs

The Spermfuge facilitates user selectable 9 programs for different applications and also for different set of protocols as standardized by various clinics, laboratories and regulatory bodies.

Clinically Proven

Multiple publications are available which prove the clinical efficacy of the Spermfuge.

1000+
Installations

ANDROSCOPE - BASIC

androscope
basic
CE



Order Code : WS 1024

The **Androscope Basic**, with its simple and cost effective design, represents the starting point for beginners in the field of Andrology.

With simple brightfield optics, specifically designed for use by beginners, the Androscope Basic is the go to product in terms of microscopy, for novice andrologists.

Features:

- Parfocal and centered optics.
- Multilayer coating for antifungal protection.
- Choice of Halogen and LED illumination.
- Easy Access for Lamp Replacement.

ANDROSCOPE - ADVANCED

The **Androscope Advanced** is a combination of superior technology and ergonomic design. With its compact and robust mechanical structure and feature rich configuration, the Androscope Advanced is a right mix of affordability & reliability.

It is a versatile product which meets the needs of andrologists looking to take their sperm analyses a step further and deliver optimal results each and every time.

Features:

- The 0-25° eyepiece arc allows flexibility in viewing angles.
- High throughput focusable eyepieces with Super Plan RP2 series phase contrast objectives.
- All optical surfaces are treated with anti-fungal coatings.
- Ceramic stage ensures perusal of slides without degradation of the stage surface.
- Flip top Abbe condenser for superb contrast from 2.5X to 100X magnification.
- LED True Kohler illumination system.
- Double layer bulb housing for low heat emission.

androscope
advanced
CE



Order Code : WS 1023

Phase
Contrast

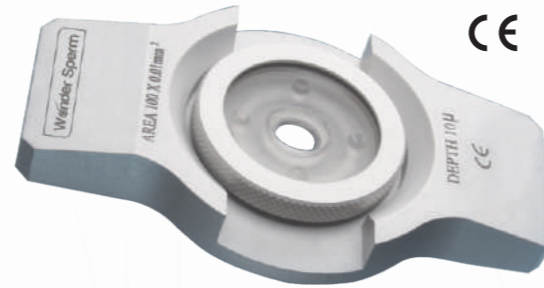
SPERM COUNTING CHAMBER

Sperm count and motility are two key parameters in semen analysis and the quick, accurate assessment of these parameters is essential. The **Wondersperm Sperm Counting Chamber** is a compact and useful instrument which makes this possible. It is a precise & easy to use device for instant & accurate assessment of sperm count and motility in undiluted semen samples.

Features:

- Ergonomic design.
- Chamber grip provided with device for stability and smooth movement on microscope stage.
- Defined micrometric grid allows direct estimation of sperm concentration in millions per ml in undiluted sample.
- Chamber depths of 10 μ or 20 μ as per requirement. Uniform depth of chamber allows quantitative and qualitative assessment of sperm motility in same plane of focus while allowing free lateral movement of sperm heads.
- Facilitates easy microscopic assessment due to uniform semen smear formation.

Wonder Sperm

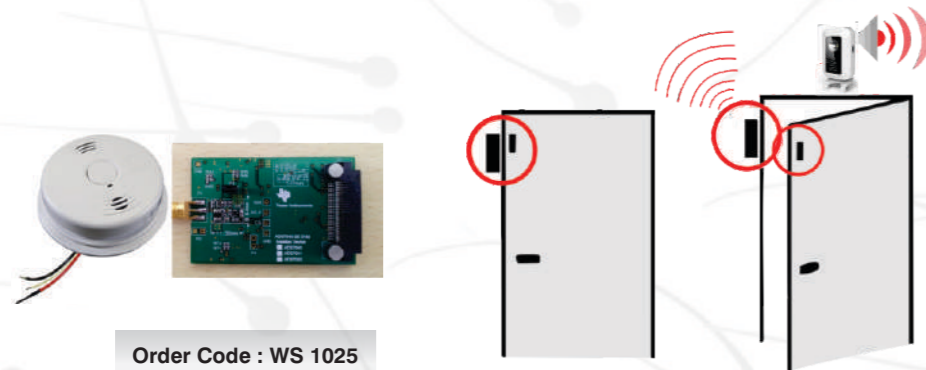


Order Code : WS 1016

Accessories:

- Chamber grip.
- Plastic bottle for distilled water.
- Cleaning brush.
- User manual.

COLLECTION ROOM DEVICE



Order Code : WS 1025

Patient safety in an enclosed room is of paramount importance in the modern regulatory frame work in health care institutions world wide.

In an ART program, after the male patient makes his entry into the semen collection room, it is expected that he should be left undisturbed. However, in an emergency, there is no way that the patient can communicate with the lab staff. Hence, the collection room device is very useful to ensure patient safety. The collection room device comes with micro control circuit and a motion sensor which can be retrofitted into existing or newly

planned collection room. The **Collection Room Device** performs 3 major tasks.

- Provides an emergency push button alarm.
- Motion sensor raises an alarm if the no activity is detected for over 10 minutes.
- Ensures patient safety.

ANDROBOX

androbox

For temperature regulation while handling spermatozoa, the **Androbox**, a simple non CO₂ incubator, has been designed specifically for use in Andrology labs. Its precision parameters will help Andrologists to do a precise evaluation.

Features:

- Working size MM - 250X250X250
- Temp range - room temp +5 to 65°C
- Accuracy- +/- 0.5°C
- Capacity-16 litres
- Power consumption-150 Watt
- Power supply-220 VAC 50 Hz



Order Code : WS 1027

MICRO CO₂ INCUBATOR

The **Micro CO₂ Incubator** is economical, light weight and portable. It is easy to set up as well as use, and occupies minimal space due to its compact design. The small 15.2 litre chamber allows for personal incubation.

Features:

- Precise control by IR sensor.
- Quick recovery.
- Digital set up for temperature & CO₂.
- Forced air circulation by fan.
- Excellent temperature uniformity.
- Rounded comers for easy cleaning.
- Cooling & heating by Peltier.
- Suitable for short term culture.
- Can be integrated in a laminar flow hood.
- Ideal for Andrology.

MICRO CO₂ INCUBATOR

CE

IR Sensor



Order Code : FX 8051

ANDROBLOCK



androblock
CE

Order Code : KT 8510

In all ART procedures, maintaining a temperature of 37°C is critical and this includes the handling of sperm during semen analysis and sperm preparation. The Wondersperm **Androblock** is an ergonomic digital temperature control system which helps ensure handling of the male gamete at 37°C. The temperature sensor monitors the temperature and the easily readable digital display shows set & actual temperature values.

Features:

- User friendly design.
- Takes up very little space.
- Holds plastic-ware and disposables required for semen analysis and sperm preparation like test tubes, Pasteur pipettes etc.
- Holds upto 18 tubes at one time thus allowing handling of multiple samples.

CRYOCANS



Cryocan Transport (26 Ltr)

Order Code : WS 1045

Cryocan Biological (11 Ltr)

Order Code : WS 1044

Liquid Nitrogen container is used for ultra low temperature preservation of semen for Assisted Reproductive Technology, storage of biological sample for medical research applications as well as low volume transportation of Liquid Nitrogen.

Biomedical sample storage containers are supplied with canisters whereas transport cryocans are used for Liquid Nitrogen storage.

MICROPIPETTES

Power Pipette:

Calibration as per DIN 12650 & ISO 8655 standards. "CE" mark awarded. It has a click-stop digital system for volume setting.

Autoclavable lower assembly. Ergonomic design ensuring light weight & soft plunger movement. High accuracy and precision guaranteed. Two step plunger operation allows "Reverse Pipetting Technique".

Individual serial no. permanently marked on each pipette. Calibration report enclosed with every pipette. Color coded for easy identification.

Range available: 5-50µl, 10-100µl, 100-1000µl, 50-200µl

Micropipette 5-50 µl	Order Code : FX 6051
Micropipette 10-100 µl	Order Code : FX 6052
Micropipette 100-1000 µl	Order Code : FX 6053
Micropipette 50-200 µl	Order Code : FX 6054

CE



SLIDE WARMER



Order Code : WS 1028

The Wondersperm **Slide Warmer** is a temperature control system which facilitates optimal slide incubation prior to being loaded with semen for analysis. The entire slide surface being in contact with the heated base ensures uniform heat transfer. This pre incubation prior to use eliminates cold / thermal variations.

Features:

- Accommodates multiple glass slides at a time.
- Multiple slides can be handled and ample space prevents mix-up.
- Compact and ergonomic design.
- Uniform heating across the entire slide surface.

AQUA WARMER



Order Code : WS 1029

Ideal for use in DNA fragmentation where the agarose needs to be melted using a water bath – one at 70°C for melting the agarose and one at 37°C. The digital, temperature controlled Wondersperm **Aqua Warmer** is an excellent option for gentle heat transfer and consistency in temperature maintenance and also makes monitoring of the temperature very easy. **A Water Bath has much better temperature uniformity than Dry Block Tube Warmers for this application.**

Features:

- Compact design for space economy.
- No stirred water bath.
- Uniformity of temperature.
- Facility for multiple tube handling.

ANDRO LAB BENCH



Order Code : WS 1030

“Linear is Better”

Reliable, good quality and bio-friendly furniture forms an integral part of a well established Andrology laboratory. Introducing the **Andro Bench** modular laboratory furniture. The design and linear set up of the Andro Bench is done so as to facilitate optimum utilization of every bit of space available in the lab while keeping in mind user comfort.

Features:

- **Linear design** ensures optimal utilization of space available even in laboratories with space constraints.
- Stable granite tops are sturdy and also reduce vibrations.
- Modules are interchangeable and are designed along with ample leg space for comfortable working while seated.
- The organized design means all the essential requirements are easily accessible.
- Option of MS or SS material available.
- Smooth bench surfaces ensure ease of cleaning.

MODULAR CASA (COMPUTER ASSISTED SPERM ANALYZER)



Wondersperm **Modular CASA** is a new generation product which facilitates computer aided semen analysis of sperm parameters as per the criteria established by the WHO (World Health Organization). The combination of the image processing hardware and software, along with the integrated database and customizable report formats, will equip andrologists, embryologists and researchers alike with a user friendly tool which will help simplify semen analysis. Thanks to the simple user interface, all analyses are quick and easy to perform in a

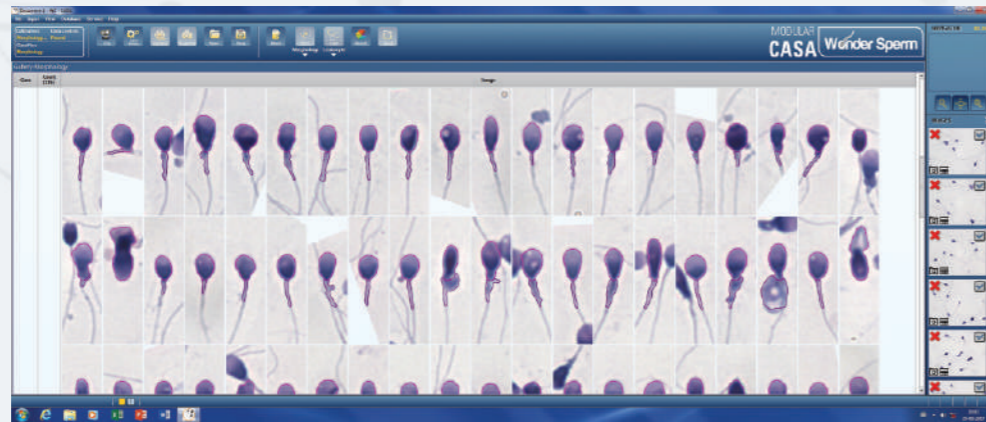
precise, objective manner with reproducible results, something which is not possible in manual semen analysis.

There are 4 independent analysis modules which the user can incorporate in any combination or even as a single module.

The large 29" monitor allows easy multi-tasking so that everything can be done on a single screen without the need for opening multiple windows. Embedded motorized stage drivers are also included as a standard feature.

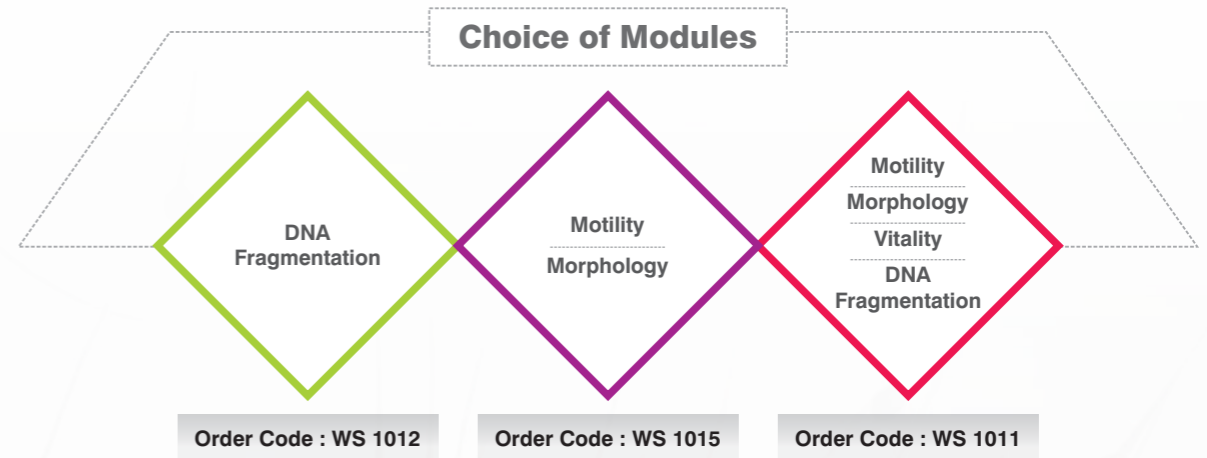
Gallery View:

The unique "Gallery View" which is a part of all modules helps in quick review and analysis. All this, along with a host of other useful features, makes WS CASA a reliable and handy tool for rapid, accurate semen analysis.



Analysis Modules

MOTILITY	VITALITY	MORPHOLOGY	FRAGMENTATION
Assessment of sperm concentration & motility at 10X / 20X phase contrast.	Assessment of sperm viability at 50X brightfield under oil.	Assessment of sperm morphology at 50X brightfield under oil.	Assessment of sperm DNA fragmentation at 50X brightfield under oil.



ALL INCLUSIVE SYSTEM CONFIGURATION FOR OPTIMAL PERFORMANCE

	Nikon E200 with 10X & 20X phase objectives and 50X oil objective as standard.		Ultra easy user interface. Switch between morphology and motility modules with a click of a button.
	3.1 MP Jenoptik German Camera.		4 independent analysis modules which can be chosen based on user requirement.
	Dell Optiplex 9020 with 1 TB HDD and 3 year onsite next business day warranty.		Both WHO 4th and 5th Edition Classifiers incorporated in Motility Module.
	Ultra wide 29" Monitor with dual screen interface for easy multitasking.		Motorized stage module enabled as default with built in drivers. No extra charges. NOTE: Higher end microscope and motorized stage needs to be purchased by the user.
	Wifi enabled printer featuring low cost ink tank technology which allows you to print up to 6000 pages.		Gallery View for easy and fast working on analyzed spermatozoa. Enables easy manual intervention and faster editing, processing and report generation.
	APC 1500 VA UPS which protects all peripherals and can provide battery backup for almost 50 mins in case of power failure.		User friendly database index (Wondersperm Index).
	Sperm Counting Chamber with 2 coverglass (One with grid and one without grid).		Highly optimized database with filter and sort function. Wide range of parameters to search information in the database (Wondersperm Index).
	Wifi Dongle included in hardware package.		Choose standard report formats or design your own without any programming or technical knowledge.
	1 year warranty as standard.		Remote Support Software preinstalled for easy issue resolution by remote assistance.

HALOVIEW



DNA Fragmentation Kit

Role of DNA Fragmentation in Male Infertility:

The integrity of the sperm genetic material is important for normal embryonic development. Thus, tests for DNA fragmentation, like those based on the sperm chromatin dispersion (SCD) test are also gaining importance, especially in cases of unexplained infertility and recurrent miscarriage. Haloview[®], developed by Shivani Scientific, based on the SCD test, provides a ready to use diagnostic kit for the assessment of Sperm DNA Fragmentation.



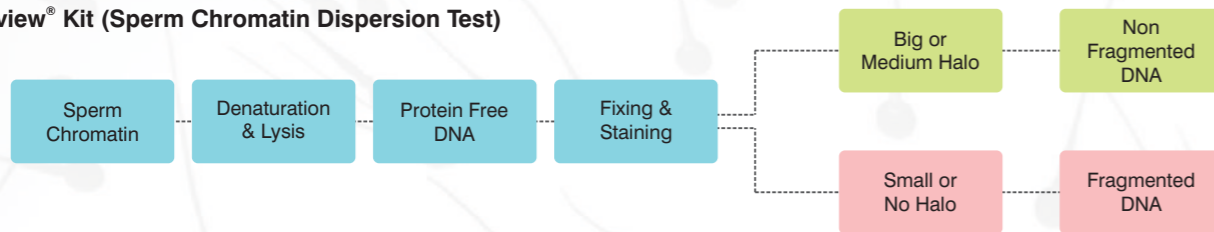
Order Code : WS 1010



Things to Think About:

- If >30% sperm have abnormal chromatin; fertility is hampered, which is independent of sperm number, morphology, and motility.
- Infertile patients have higher mean level of DNA fragmentation (40.9+14.3%) than men of proven fertility (13.1+7.3%).
- Sperm DNA damage is associated with a significantly increased risk of pregnancy loss after IVF & ICSI.

Haloview[®] Kit (Sperm Chromatin Dispersion Test)

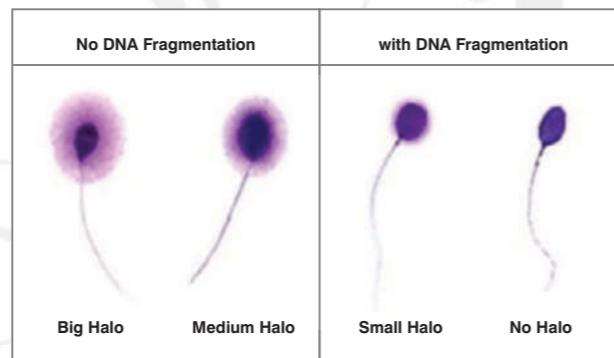


ASSAY	PRINCIPLE	MEASURED PARAMETER	DETECTION METHOD
SCD	Mild acid denaturation of DNA and lysis of protamines creates a chromatin decondensation halo around the sperm head when the DNA is intact, and no Halo when the DNA is damaged.	% cells with small or absent decondensation Halo.	Bright Field Microscopy (40X).

Advantages of Sperm Chromatin Dispersion Test:

Equipment	Requires simple compound microscope
Manpower	Simple test which can be performed with little training
Time	Comparatively quick
Cost	Low

Interpretation of Results:



MORPHOLOGY KIT

Significance of Sperm Morphology - Quality over quantity:

For effective fertilization, we not only require good number of actively motile, capacitated sperm but also, need sperm which are morphologically normal. Sperm are classified as normal only when the head, mid-piece and tail are free of abnormalities. The Wondersperm **Diff Quick Morphology** staining kit allows us to visualize the sperm morphology and highlight any abnormalities which may be present. Proper assessment of sperm morphology helps us in identifying factors affecting the fertilization potential of spermatozoa.

Features:

- Ready to use diagnostic kit to assess sperm morphology.
- Quick and easy procedure to perform.
- Contains two staining solutions.
- Effective staining and contrast for easy visualization of sperm at 100X under oil immersion.
- To be preserved at room temperature away from direct sunlight.



Order Code : WS 1031



VITALITY KIT



Order Code : WS 1033

pH KIT



Order Code : WS 1032

Macroscopic Examination of Semen pH:

According to the WHO, the normal pH of human semen is in the range of 7.2 – 7.8. The seminal fluid is a combination of secretions from the seminal vesicles, prostate and bulbourethral glands, which are responsible for maintaining optimal semen pH. Low/high pH values are an important indicator of male fertility. The Wondersperm **pH Kit** provides quick and easy estimation of semen pH.

Feature:

- Ready to use diagnostic kit for estimating pH of semen samples.
- Contains individual pH strips along with standard color comparison.
- Easy estimation of pH within 30-45 secs.

Significance of Sperm Vitality

Sperm membrane integrity and sperm vitality, are important aspects to be assessed. It is especially in case of severely compromised sperm parameters like membrane integrity which affects the fertilization potential of spermatozoa. The Wondersperm **Vitality Kit** with its combined Eosin - Nigrosin solution allows rapid assessment of sperm vitality.

Features :

- Ready to use diagnostic kit to assess sperm membrane integrity.
- Contains single staining solution.

FRUCTOSE KIT

Significance of Fructose Estimation:

The secretions from the seminal vesicles make up the bulk of the volume of the seminal fluid and contain fructose, prostaglandins, citric acid, inorganic phosphorus, potassium, and coagulant proteins. Of these, fructose is a highly useful biomarker indicating seminal vesicle function and also serves as an energy substrate for the spermatozoa. The Wondersperm **Fructose Kit** is an easy to use sperm function kit for the detection of this important macromolecule.

Features:

- Ready to use kit for the detection of Fructose in semen samples.
- Simple, inexpensive and quick test to perform.

CE IVD



Order Code : WS 1034

HOS KIT

CE IVD



Order Code : WS 1036

Estimation of Sperm Viability by HOS Test:

The Hypo Osmotic Swelling (HOS) test is an assay for assessing the viability of sperm and is a simple test which gives information about the sperm membrane integrity. Unlike the dye exclusion vitality test, the sperm are not fixed in the HOS test and it helps ICSI practitioners to correctly pick out viable spermatozoa from poor semen samples which show drastically compromised motility. The Wondersperm **HOS Kit** makes real time physiological detection of viable spermatozoa extremely simple.

Features:

- Ready to use diagnostic kit for detection of viable sperm.
- Ideal for use in ICSI in case of severe OAT wherein post HOS, the sperm are selected ensuring intact membrane integrity.

LEUKOCYTE KIT

CE IVD



Order Code : WS 1035

Significance of Leukocyte Estimation:

Along with the spermatozoa, there are other cells like immature germ cells, pus cells and leukocytes (WBC's) present in the semen. These are very difficult to distinguish between in a wet mount and thus need to be stained for proper identification. Elevated levels of leukocytes result in an increase in ROS in the semen. The elevated ROS levels cause damage to the spermatozoa thus impairing their fertilization potential. The Wondersperm **Leukocyte Kit** provides a simple staining method for the detection of leukocytes in semen.

Features:

- Ready to use diagnostic kit for the detection of WBC's in semen samples.
- Ideal from diagnostic viewpoint – Prostatitis or infection – seminal vesiculitis.
- Easy and reliable estimation of peroxidase positive WBC's.

SPERM PREPARATION MEDIA

Complete range of sperm preparation media for IUI / IVF / ICSI. It features media for both Swim Up as well as Density Gradient Centrifugation. The entire range is supplied in single use, sterile glass vials, enabling ease of use & at the same time, preventing contamination

WS - Swim-Up

Used for separation of actively motile, capacitated spermatozoa by swim up, for use in ART procedures. It is also useful for the dilution of silica based density gradients for semen samples prepared using double layer density gradient separation. Comprises a HEPES buffered medium ideal for routine sperm wash.

Features:

- Sterile, packed in ready to use sealed glass vials (10 x 5ml).
- Maximum isolation and recovery of motile sperm.
- Prevents sperm damage due to reactive oxygen species (ROS).
- Eliminates sub optimal sperm.
- Shelf life of 12 months from manufacturing when stored at 2-8°C.

CE



Order Code : WS 1017

CE



WS - DL 45%

Order Code : WS 1019

WS - DL 90%

Order Code : WS 1020

Density Gradient

WS - DL 45%

WS - DL 90%

Ready to use double layer density gradient media composed of silane coated colloidal silica particles with HEPES as a buffering agent. The two different density gradients (45% & 90%) enable effective separation of motile; morphologically normal sperm from oligo & asthenozoospermic samples.

Features:

- Due to double filtration it effectively separates abnormal sperm, pus cells and other cellular debris from the seminal plasma and harvests morphologically normal spermatozoa in the pellet.
- Ideal for processing oligo and asthenozoospermic samples especially for ICSI.
- Shelf life of 12 months when stored at 2-8 C.

IUI CATHETER

The **Isperm IUI catheter** is a sterile, single use (disposable), medical device used to replace washed, capacitated, motile spermatozoa concentrated in a small volume of medium into the uterus of recipient female, after Controlled Ovarian Hyperstimulation on/ around the time of ovulation. The IUI catheter when coupled with a syringe, works on the principle of negative and positive displacement of air, which will result in relative amounts of suction and expulsion of fluid. The Isperm IUI catheter aids in the smooth and atraumatic deposition of washed spermatozoa into the uterine cavity.

Features:

- The soft flexible distal tip eases placement and promotes patient comfort.
- The rigid proximal segment provides excellent control of the catheter and thereby enhanced positioning.
- Luer lock adaptor for easy syringe attachment.
- 2 sided hole near the rounded tip for complete emptying of processed semen sample.



INSEMINATION KIT



Order Code : WS 1042

The Wondersperm **Insemination Kit** is a sterile single use plasticware kit, paired with the iSperm IUI Catheter, useful in handling and processing of semen samples and Intra Uterine Insemination.

Features:

- Complete set of disposables for single IUI case.
- Contains disposables for both Swim Up & Density Gradient.
- Cost effective solution for clinics with intermittent load of IUI cases.

Kit Contents:

- Sterile 100 ml semen collection container – 1
- 14ml Round Bottom Tubes – 2
- 15ml Conical Tubes – 4
- 3ml Pasteur Pipettes – 4
- 1 ml BD syringe – 4
- 20G Needles – 4
- iSperm IUI Catheter – 1

DISPOSABLES AND ACCESSORIES

14ml Round Bottom Tubes



Sterile, single use, individually wrapped round bottom tubes for semen handling and processing.
Order Code : FX 7055

15ml Conical Tubes



Sterile, single use conical tubes for sperm processing by density gradient method.
Order Code : FX 7052

6ml Round Bottom Tubes



Sterile, single use, individually wrapped, 6ml round bottom tubes.
Order Code : WS 1043

1ml BD Syringes



Sterile, 1 ml syringes with crystal clear polycarbonate barrel. Luer lock for secure connection to needles.
Order Code : WS 1037

20G Needles



Sterile, single use needles for physical liquefaction of viscous semen samples.
Order Code : WS 1038

Micropipette Tips



Sterile, single use tips for micropipettes, for accurate micro quantity pipetting.
Order Code : FX 6051 / 52 / 53 / 54

Immersion Tray



Trays for easy overlaying of reagents on the DNA fragmentation slides.
Order Code : WS 1041

3ml Transfer Pipettes



Sterile single use, individually wrapped plastic Pasteur pipettes.
Order Code : FX 7053

Semen Collection Condom



Consists of a sterile, non-spermicidal condom for collection of semen sample in case of difficulty in collection by masturbation.
Order Code : WS 1039

Semen Collection Container



Sterile, single use semen collection container made of bio-friendly plastic.
Order Code : FX 7054

QC Beads



Ready to use suspensions of QC beads useful for quality control of sperm concentration analysis.
Order Code : WS 1040



ANDROLOGY TRAINING

BASIC COURSE IN SEMENOLOGY & IUI

Course Objective:

This module aims at providing basic to advanced knowledge in Semenology and sperm preparation techniques, guided hands on will aid the candidate to understand & confidently perform the same.

Methodology of Training:

Interactive Basic sessions Guided Hands-on Training in:

- Semen collection, delivery and method of collection.
- Initial & Macroscopic Examination.
- Microscopic examination for count & motility.
- Morphology estimation according to WHO & Kruger's strict criterion.
- Advanced tests like Hypo Osmotic Swelling Test, Vital Staining, and Fructose estimation.
- Optional test like sperm chromatin assay, ROS estimation, estimation of Zinc, anti sperm antibodies etc.
- Cryopreservation of sperm.
- Sperm preparation techniques.

Course Duration:

- 12 hrs in 2^{1/2} days

Course Code

- EC01



ORIENTATION COURSE IN COMPUTER ASSISTED SEMEN ANALYSIS (CASA).



Course Objective:

The course comprises 3 different modules based on the requirement of the candidates. The 3 modules aim to provide basic to advanced knowledge on the different aspects of CASA. Additional guided hands on will aid the candidate to understand & confidently perform CASA in a rapid and objective manner with consistent, reproducible results.

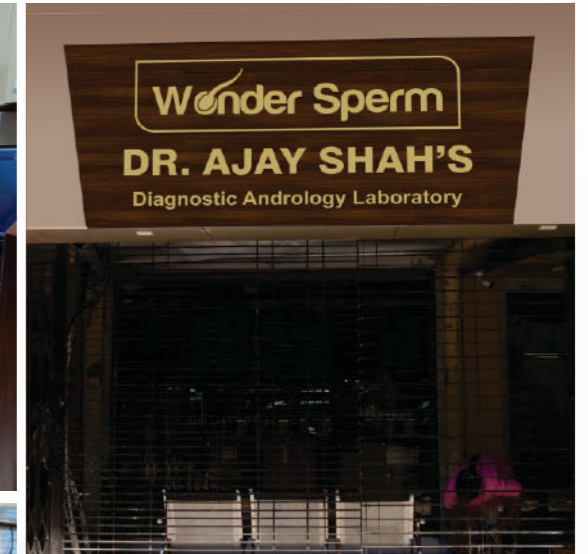
Course Modules

Basic: Basic Overview of CASA	Duration : 2 Days	Code : E04
Advanced: Basic Overview of CASA and Extended Hands-on with live samples	Duration : 4 Days	Code : E05
Clinical: Basic Overview of CASA, Extended Hands-on with live samples & clinical observership	Duration : 6 Days	Code : E06



For more details email us at : support@ivftraining.com / Log on to www.wondersperm.com

TURNKEY PROJECTS FOR DIAGNOSTIC ANDROLOGY LABORATORY



Many a times, the inability of a couple to conceive is due to abnormalities of the sperm, either in terms of sperm production or sperm function. The routine semen analysis, either done manually or using gadgets like Computer Assisted Semen Analysis, as well as other sperm function tests can generate a lot of valuable information which can help clinicians diagnose male factor infertility more accurately.

The Wondersperm Diagnostic Laboratory is a well equipped Andrology laboratory, with experienced lab technologists, well versed in the testing of human spermatozoa. It offers referring clinicians the opportunity to get a plethora of useful information which will help them choose the best line of treatment.

All in all, the objective is to provide total solutions for the assessment of male reproductive health using both routine and advanced methods of semen analysis, while ensuring quality, objectivity and reproducibility of analysis, thus benefitting Andrologists, Gynecologists and ART practitioners alike in getting an idea of the fertility potential of the male partner.

Guided by the "Patient First" motto, the team at the Wondersperm Diagnostic Laboratory aims to provide utmost care and meticulous services that go hand in hand with the needs of the patient.

We help you to set-up your own laboratory

- Site Survey & Designing
- Feasibility Studies
- Regulatory Compliance
- Equipment Selection
- Personnel Training
- Setting up of SOPs
- Finance and Billing
- Marketing Support

Order Codes

Sr. No.	Product Name	Order Code
01	Andro Station	WS 1021
02	Andro Fuge	WS 1026
03	Spermfuge	FX 1056
04	Andro Scope Basic	WS 1024
05	Andro Scope Advanced	WS 1023
06	Sperm Counting Chamber	WS 1016
07	Collection Room Device	WS 1025
08	Andro Box	WS 1027
09	Micro CO ₂ Incubator	FX 8051
10	Andro Block	KT 8510
11	Slide Warmer	WS 1028
12	Cryocan - Biological (11 Ltr)	WS 1044
13	Cryocan - Transport (26 Ltr)	WS 1045
14	Aqua Warmer	WS 1029
15	Micropipette (5-50 μ l) / (10-100 μ l) / (100-1000 μ l) / (50-200 μ l)	FX 6051 / 52 / 53 / 54
16	Andro Lab Bench	WS 1030
17	CASA-DNA Module	WS 1012
18	CASA - Motility + Morphology Modules	WS 1015
19	CASA - Full System	WS 1011
20	Haloview - DNA Fragmentation Kit	WS 1010
21	Morphology Kit	WS 1031
22	Vitality Kit	WS 1032
23	pH Kit	WS 1033
24	Fructose Kit	WS 1034
25	HOS Kit	WS 1036
26	Leukocyte Kit	WS 1035
27	WS - Swim up	WS 1017
28	WS - DL 45%	WS 1019
29	WS - DL 90%	WS 1020
30	I-Sperm - IUI Catheter	FX 7051
31	Insemination Kit	WS 1042

Specifications and Equipment are subject to change without any notice

Shivani
Enabling life through technology

**We Innovate.
We Create.**

ISO 9001 : 2015 | ISO 13485 : 2003 | CE

Shivani House, 26/A, Raju Indl. Estate, Penkar Pada Road, Mira 401 104, Dist. Thane (Mumbai) INDIA.

Tel : +91 22 2896 1768 / 6770, +91 22 2897 6769, Fax : +91 22 2896 6766

Website : www.shivanilVF.com, Email : marketing@shivaniscientific.com

www.wondersperm.com, Email : exports@shivaniscientific.com